

# Create an impressive user onboarding experience using ServiceDesk Plus



Prem Maheswaran

**ManageEngine**

# ManageEngine

a division of Zoho Corp.

A division of Zoho Corporation, a bootstrapped,  
private, and profitable company



**18+ years** of  
IT management  
solutions expertise



**180,000+**  
customers



**2,500+**  
employees



**90+ products &**  
free tools for IT  
management



**190+**  
countries

[www.manageengine.com](http://www.manageengine.com)

# ManageEngine ServiceDesk Plus

ITIL-ready service desk software with integrated asset management  
and enterprise service management capabilities



In the market  
**since 2005**



Used by **100,000+**  
service desks  
worldwide



Available in  
**37** languages



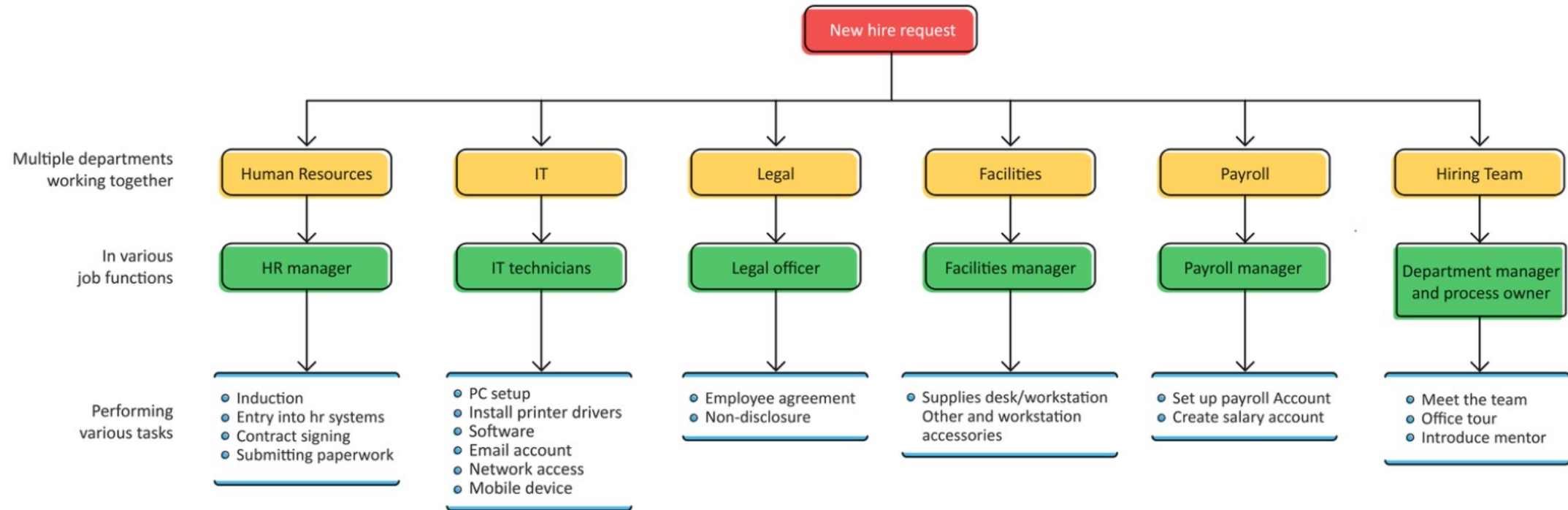
Offered as  
**on-premises  
& cloud** versions



Hosted in  
**ManageEngine  
owned data centers**

[www.servicedeskplus.com](http://www.servicedeskplus.com)

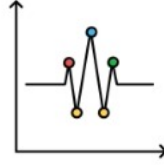
# Each new hire request comes with...



# That leads to roadblocks at every step...



1. Mass hiring to fill open positions results in onboarding multiple new hires in a day



2. IT silos and lack of communication result in process lapses and inconsistencies



3. No efficient process to gather employee details, except mails shooting back and forth giving rise to human errors



4. Multiple technicians working together from multiple sites, with different job functions leading to lack of clarity in responsibilities



5. Several tasks fall through cracks and there's no process to efficiently track the tasks



6. Lack of automation for approvals to speed up processes like routing, assignment, and approvals.



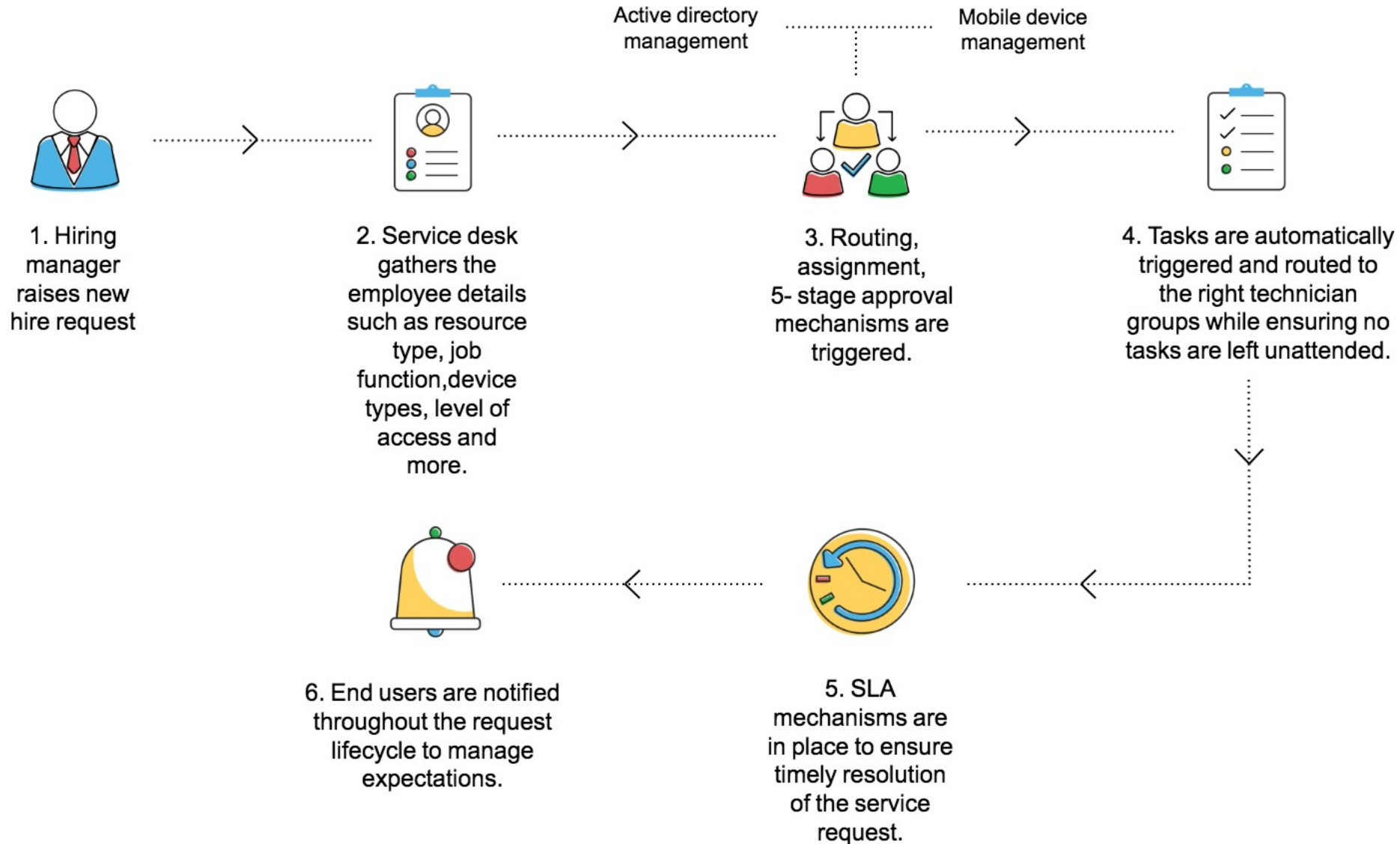
7. No SLAs to ensure timely delivery of the request



8. Hiring across multiple locations results in lack of visibility and central control over the onboarding process



# For employee onboarding to function smoothly, how it should work....





## **Onboarding with ServiceDesk Plus...**

**[hello@servicedeskplus.com](mailto:hello@servicedeskplus.com)**